



ROSER COMMUNITY CHURCH

MORNING WORSHIP • 8:30 AM & 10:00 AM
September 17, 2017 • 15th Sunday after Pentecost

An asterisk (*) indicates when those who are able will stand.

LOVING CHRIST SHARING HIS GRACE SERVING ALL

*We are so happy you are
worshiping with us today!
If you have questions or need
any assistance, please see an Usher
or stop by the Welcome Desk.*

Assistance Hearing Devices
are available from an usher.
To activate the LOOP HEARING
SYSTEM please turn your
hearing aid to T-coil.

The **Cry Room** (off the Narthex)
is available for nursing moms and
those with special needs.

A **Nursery** is available in the
Christian Education Building for
children under the age of 5 yrs.

Children, K-5th grade may attend
Church School following the
Children's Sermon. Youth meet
on the 2nd and 4th Sundays.

Please note on the prayer card
or call the office (941-778-0414)
if you or someone you know
would like a **Pastoral Visit**
or is in the hospital.

PASTOR
Rev. Dr. Robert O'Keef
910-580-7359

ASSOCIATE PASTOR
Rev. Neil Crowell
980-521-7129

DIRECTOR OF MUSIC MINISTRIES
Kristen Stanton

CHIMING OF THE TRINITY

A time to quiet our hearts, minds and voices in preparation for
worship. Please fill out your prayer request cards at this time to be
handed to the ushers later in the service.

PRELUDE *Variations on "Old Hundredth"* Sobaje

SIGNING OF FRIENDSHIP REGISTER & ANNOUNCEMENTS

Please sign the Friendship Register with your name and address for
our records of attendance and pass along to your pew mates.

***CHORAL CALL TO WORSHIP (Unison)**
In your Church, Lord, be glorified, be glorified.
In your Church, Lord, be glorified today.

***HYMN OF ADORATION** *When In Our Music* No. 403

***PRAYER OF PETITION (Unison)**
**Make us worthy, Lord, to serve those throughout the world who
live and die in poverty or hunger. Give them, through our hands,
this day their daily bread; and by our understanding love, give
peace and joy. Amen.**

GREETING ONE ANOTHER IN CHRISTIAN LOVE

CALL TO PRAYER *Into My Heart* Clarke

(Your prayer request cards will be collected by the ushers.)

(Minister). . . In your steadfast love and mercy,
(People). . . Hear our prayers, O God.

SILENT PRAYER

PASTORAL PRAYER

THE LORD'S PRAYER (Unison)

**Our Father, who art in heaven, hallowed be thy name. Thy king-
dom come, thy will be done on earth as it is in heaven. Give us
this day our daily bread, and forgive us our debts, as we forgive
our debtors. And lead us not into temptation but deliver us from
evil: For thine is the kingdom, and the power, and the glory, for-
ever. Amen.**

CHILDREN'S SERMON

THE GIVING OF GOD'S TITHES AND OUR OFFERINGS

DEACON OF THE MONTH Anne Morse
MISSION OF THE MONTH Beth-El (page 3)
SOUND DIRECTOR Alan Ward
SOUND TECHNICIAN Michael Jennis
NURSERY LEADER Lisa Lardas
SUNDAY CUSTODIAN Jim Webb
FACILITIES ADMINISTRATOR Charles Wade
FINANCIAL ADMINISTRATOR Matt Meehan
CHURCH SECRETARY Cyndy Custis
MEDIA FACILITATOR Bev Hunsberger

**The flowers on the altar
this morning are given
to the glory of God:**

To the Glory of God.

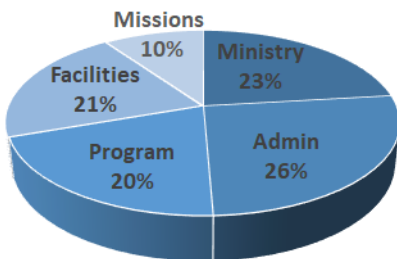
Happy birthday to
Joy Bennington, from Jim.

To honor a loved one with
SANCTUARY FLOWERS,
please sign the book in the
Narthex or contact the office
(941-778-0414).

HOW ARE WE DOING?

YTD Attendance (9/3)
2016 - 12,121
2017 - 11,691
YTD Contributions (9/3)
2016 - \$307,362
2017 - \$322,922
YTD Expenses - \$373,834
YTD Income - \$422,935

Contributions comprise the
portion of income donated by the
congregation. Monthly financial
reports available in the church
office provide full detail.



2017 YTD Use of Cash Received

OFFERTORY ANTHEM *Come, Christians, Join to Sing* Pethel

8:30 - Island Praise Quartet:
Cathy Meehan, Glenda Beck, Jill Morris, Mike Meehan
10:00 - Chancel Choir

***DOXOLOGY** *Praise God From Whom All Blessings Flow* **No. 809**
*Praise God from whom all blessings flow;
praise Him, all creatures here below;
praise Him above, ye heavenly host;
praise Father, Son and Holy Ghost. Amen.*

***AFFIRMATION OF FAITH** *The Apostle's Creed (Unison)*
I believe in God, the Father Almighty, maker of Heaven and earth; and in Jesus Christ, His only Son our Lord, Who was conceived by the Holy Spirit, born of the Virgin Mary, suffered under Pontius Pilate, was crucified, dead and buried; the third day He rose from the dead; He ascended into Heaven, and sitteth at the right hand of God, the Father almighty; from thence He shall come to judge the quick and the dead. I believe in the Holy Spirit, the holy catholic Church, the communion of saints, the forgiveness of sins, the resurrection of the body and the life everlasting. Amen.

***HYMN OF PREPARATION** *Awake, O Sleeper* **No. 449**

SCRIPTURE **Romans 13: 8-14**
Let no debt remain outstanding, except the continuing debt to love one another, for whoever loves others has fulfilled the law. The commandments, "You shall not commit adultery," "You shall not murder," "You shall not steal," "You shall not covet," and whatever other command there may be, are summed up in this one command: "Love your neighbor as yourself." Love does no harm to a neighbor. Therefore love is the fulfillment of the law. And do this, understanding the present time: The hour has already come for you to wake up from your slumber, because our salvation is nearer now than when we first believed. The night is nearly over; the day is almost here. So let us put aside the deeds of darkness and put on the armor of light. Let us behave decently, as in the daytime, not in carousing and drunkenness, not in sexual immorality and debauchery, not in dissension and jealousy. Rather, clothe yourselves with the Lord Jesus Christ, and do not think about how to gratify the desires of the flesh.

(Leader)...The word of God for the people of God.
(People)...Thanks be to God.

SERMON **"WAKE UP!"** Dr. Bob O'Keef

Discipleship

***HYMN OF DEDICATION** *We Are God's People* **No. 700**

BENEDICTION

Benediction Response *Lord, Dismiss Us With Your Blessing - #834*

Lord, dismiss us with your blessing; fill our hearts with joy and peace. Let us each your love possessing, triumph in redeeming grace; O direct us and protect us, traveling through this wilderness.

POSTLUDE *Postlude on "Sicilian Mariners"* Fedak

THIS WEEK AT ROSER

NOTE: Thrift Shop closed this month

SUNDAY • September 17

SPECIAL MUSIC Roser Ringers
8:30 WORSHIP SERVICE Chapel
8:45 Adult Sunday School Class . . . FH
10:00 WORSHIP SERVICE S
10:00 Church School CD

MONDAY • September 18

9:30 Stew/Fin Board FH
12:00 Bridge FH
1:00 Music Committee CB
2:00 Missions Committee CD
6:30 BRed CD
7:30 AA & Alanon S

TUESDAY • September 19

9:00 Volunteer Workday
9:30 Executive Meeting CB
11:00 Staff Meeting
3:15 Joyful Noise Rehearsal Pg 4
6:30 New Worship Committee

WEDNESDAY • September 20

9:00-11:00 Thrift Shop Donations . . Pg 8
9:30 Roser-Robics Pg 5
2:45 Golfing for God Pg 5

THURSDAY • September 21

10:30 AA Meditation CD
7:00 Chancel Choir Pg 4
7:30 AA & Alanon FH & LB

FRIDAY • September 22

9:30 Roser-Robics Pg 5

SATURDAY • September 23

No activities today.

SUNDAY • September 24

FELLOWSHIP SUNDAY
SPECIAL MUSIC: GRACE NOTES
8:30 WORSHIP SERVICE Chapel
8:45 Adult Sunday School Class . . . FH
10:00 WORSHIP SERVICE S
10:00 Church School CD

ROOM KEY

CB - Classroom B, CD - Classroom D,
CM - Colman, FH - Fellowship Hall,
LB - Library, S - Sanctuary



Migrant farmworkers are the poorest of the working poor. Some remain in one location year round, while others follow the crops. Beth-El Farmworker Ministry began in 1976 when a small group of Cumberland Presbyterians rented a tiny house in Ruskin, Florida and began holding Spanish-language church services for migrant farmworkers. When the families came to worship, their many other needs were obvious: they were usually hungry, often cold in winter, some slept in cars or trucks, many could neither read nor write, and most lived in fear of deportation. In its effort to meet some of those needs, Beth-El grew.

Now legally a nonprofit corporation, Beth-El Farmworker Ministry, Inc. has a 27-acre site on U.S. Highway 301 about 20 miles south of Tampa. The Ministry serves the nearby rural population. To learn more about Beth-El go to www.beth-el.org.

To donate to Beth-El, please use the envelope in the pew or GIVE online at www.RoserChurch.com/GIVE and note that your gift is for MISSION OF THE MONTH.

GRAND PIANO DEDICATION RECITAL

4:00 PM • Sunday, October 29 in the Sanctuary



There is no admission charge for the concert; a free will offering will be taken. Headlining the event will be Sarasota-based pianist Don Bryn who will perform a diverse repertoire of classical and jazz selections.

Bryn is the Director for Theory and Keyboard Studies at State College of Florida, accompanies services for

the Unitarian Universalist Church of Sarasota, and works as a vocal coach for the Asolo Conservatory for Actor Training. Also featured on the recital will be Roser Church musicians Mary Deur (flute), Phyllis O'Keef (organ/piano), Kristen Stanton (piano) and Scott Stanton (bass).

We are so grateful to our grand piano donors who helped to make this possible!

Mark Your Calendar

Tuesday • September 26

Tues@2 Women's Study: The Lord's Prayer (2:00 PM)

Wednesday • September 27

JOY (Just Older Youth) (11:00 AM)

Tuesday • October 3

Terrific Tuesdays begin Pg 6

Wednesday • October 4

GriefShare begins Pg 7

Golfing for God at IMG (2:45 PM)

Tuesday • October 10

Tues@2 Women's Study: The Lord's Prayer (2:00 PM)

Wednesday • October 11

JOY (Just Older Youth) (11:00 AM)

Wednesday • October 18

Golfing for God at IMG (2:45 PM)

Saturday • October 21

BAYFEST

Wednesday • October 25

JOY (Just Older Youth) (11:00 AM)

Sunday • October 29

Piano Dedication Recital (4:00 PM)

Saturday • November 4

CRAFT FAIR

Tuesday • November 14

Women's Guild Luncheon (12:00 PM)

Sunday • December 3

ADVENT FAMILY NIGHT

Sunday • December 10

Advent Cantata (8:30 & 10:00 AM)

Tuesday • December 12

Women's Guild Christmas Tea (1:00 PM)

Tuesday • January 9

Women's Guild Luncheon (12:00 PM)

Sunday • January 28

Concert Series (4:00 PM)

Tuesday • February 13

Women's Guild Valentine Tea (1:00 PM)

Sunday • February 18

Concert Series (4:00 PM)

Sunday • March 11

Concert Series (4:00 PM)

Tuesday • March 13

Women's Guild Luncheon (12:00 PM)

Sunday • March 25

Lent Cantata (Palm Sunday)

Tuesday • April 10

Women's Guild Luncheon (12:00 PM)



TUES@2

or join your buddies. Please RSVP online at www.roserschurch.com/tues2, call the church office at 941-778-0414 or contact Cass Robertson to order your study materials.

COST: \$4, scholarships available

2:00 PM • TUESDAY, SEPT 26 & OCT 10

All ladies are invited to join us for this two-part study of the Lord's Prayer. If you have been wondering who we are and what we do in our study, this would be great time to check us out! Come and make some new friends



JOY

JUST OLDER YOUTH

WEDNESDAY, SEPTEMBER 27

Financial Pitfalls

A FINANCIAL EDUCATION WORKSHOP by JOYCE ANGERAME

The Foundation for Financial Education is a 501(c)3 non-profit organization dedicated to providing free educational resources to the public. Founded in 2009 as a result of an urgent need to eliminate financial illiteracy, F3E has helped thousands of individuals become more fiscally fit by understanding financial pitfalls that they may encounter in their everyday lives. Local industry experts contribute their time and expertise to conduct, financial workshops that are considered to be informative, entertaining and educational.

Bring your brown bag lunch and join us in the Fellowship Hall. Beverages and dessert provided!

JOY (Just Older Youth) usually meets the 2nd and 4th Wednesdays each month in the Roser Community Church Fellowship Hall.



Roser Robics

9:30 AM Wednesdays & Fridays

IN THE
FELLOWSHIP HALL

All ages and skill levels are welcome as variations are shown, including standing exercises to improve balance and flexibility. This chair-based exercise class is appropriate for older adults and those looking to lessen the impact on their joints.

1 Corinthians 6:19-20 says that your body is a temple of the Holy Spirit... so let's glorify God, have fun, and move to the music through exercises designed to increase your endurance.

THE COST:

Donation-based

BRING: 2 cans of fruit of equal size and weight to be used for class activities. Cans may be donated to the Food Pantry.

ABOUT THE INSTRUCTOR:

The instructor, Melissa Merkle, is certified as an AFAA Group Exercise Instructor and Personal Trainer and Health Coach.

For more information, visit boomersNmotion.com, call Melissa at 330-990-0990 or email coaches@boomersNmotion.com.



Dr. Bob O'Keef is teaching through THE GOSPEL OF JOHN!

The Gospel of John celebrates Jesus as the Word of God, the source of life, light, and truth. It is the most **SPIRITUAL** of the Gospels, and the most **BEAUTIFULLY WRITTEN**. Scenes of night and day are intended to help its readers move from **DARKNESS** to **LIGHT**. Only in the light of Christ can we **TRULY SEE, TRULY LIVE, and TRULY BE ALL THAT GOD WANTS US TO BE.**

WEDNESDAY, SEPT 20

IMG Academy, Bradenton

Dinner & Bible Study 5:30 PM • \$20

Dinner & Bible Study + Clinic • \$40

Dinner & Bible Study + Golf 2:45 PM • \$35

9-hole scramble for all levels of golfers

Register: Online, in the Narthex, call the office

or go to www.roschurch.com/golfing-for-god

Next dates: October 4, 18, November 1

Congratulations! The team of Brian Kramper, Rick Maddox & Dr. Bob O'Keef CONQUERED the front nine with a score of 37 at IMG to win our 8/30 outing.

OPERATION CHRISTMAS CHILD

Shoeboxes are needed by October 1st for wrapping. Please bring UNWRAPPED shoeboxes to the Narthex or church office.

After October 1 the boxes will be wrapped and placed in the Narthex.

Individuals, families and groups will be invited to take and fill the empty shoe-

boxes with gifts of toys, school supplies, hygiene items and notes of encouragement. Samaritan's Purse will deliver the gifts to children in more than 100 countries on six continents, just in time for Christmas!



EMERGENCY RESPONSE TEAM - UPDATE



Emergency Response Team will now be headed to Naples, FL (First Baptist Church). The dates to be announced!

If you are interested in joining the team, please call Neil at 980-521-7129. Thanks so much for your willingness to serve our Lord in this time of great need!

Hands On Missions

Call the Church Office for contact information— 941-778-0414.

► **Join the Missions Committee**

Never a dull moment... we are growing—adding programs and missionaries. If you have a passion for missions—check us out! Contact: Pam Alvord

► **Our Daily Bread • October 9**

To help serve contact Ann Jones. The Roser team serves on every 2nd Monday and 5th Sunday! This is a community-driven organization that provides free daily meals to all who are hungry. Hot lunch is served to over 200 people a day, 7 days a week.

► **Youth for Christ**

Volunteer, listen to the kids at club, bring food and drinks or money for food and drinks. Send a kid to camp—it could change his/her eternal future. Contact: Pam Alvord

► **Jim Russo Prison Ministry**

Donations of towels, linen, and men's needs are welcomed. Contact: Mike Oney

► **Roser Food Pantry**

Volunteer/donations
Contact: Jack & Lynn Brennan

► **Roser Thrift Shop**

Volunteer/donations
Contact: Peggy Nash

► **Beth-El Farmworker Ministry**

Any and every donation helps the migrant workers. Contact: Anne Morse

► **Roser Women's Guild**

Can tabs, canceled stamps cut from envelope with 1/3" border, school box tops and labels for education can be left in the Women's Guild Box in the church office or given to Glenda Beck for AME.

TERRIFIC TUESDAYS ARE BACK

a four-week fall installment

OCTOBER 3RD TO OCTOBER 24

Register online at www.roserchurch.com/terrific-tuesdays, write TT next to your name on the Sunday attendance pad or call the church office (941-778-0414)

Dinner at 5:30 PM each Tuesday.

THE COST IS \$6 PER PERSON (OR \$15 A FAMILY).

From 6:15 to 7:15 PM, we will offer two Bible studies for adults, and a youth/children's study as well. The two studies are:

BAD GIRLS OF THE BIBLE



There are many Bad Girls in the Bible. Each of them demonstrate one great truth -- God's sovereignty. God works through us (even our sins!) to accomplish His will. In our study, we will focus on four women whom God uses in spite of their faults -- the witch of Endor, the woman caught in adultery, Bathsheba, and Tamar. We will see, hopefully, how God can use us, too.

Taught by- Rev. Dr. Bob O' Keef

Location: Chapel

THEOLOGY OF HYMNS:

THE GOOD, THE BAD, AND THE UGLY

Ever sung hymns in church and not understood them? Have you ever wondered if some hymns line up with Scripture? This class will explore different hymns each week, study the history of them, and ask whether they are theologically sound.



Taught by- Rev. Neil Crowell

Location: Fellowship Hall



SEPTEMBER

- 18 Joy Bennington
- 18 Barbara Calhoun
- 18 Peter Hecht
- 19 Dr. Bob O'Keef
- 21 Dean Christensen
- 21 Holly Morse
- 22 Dennis Barron
- 23 Kelley Lanza
- 24 Bob Squier
- 25 Jonathan Huntington
- 27 Gary Alvord
- 27 Barbara Stratton
- 27 Gail Tutewiler
- 29 Charlene Kennedy
- 30 Patty Ball

OCTOBER

- 1 Tess Coleman
- 1 Alan Ward
- 4 Major Leckie
- 8 Dale Dohner
- 9 Margret Art
- 10 Sam Howells
- 18 Darlene Head
- 18 Lore Morgret
- 19 Carolyne Norwood
- 21 Jim Bickal

If your birthday is not listed or is incorrect, please call the office (941-778-0414) or email info@roserchurch.com



BEGINNING ADULT PIANO CLASS

Always wanted to learn to play the piano but never had time?? Played years ago but have forgotten most of what you learned?? Then this is for you!

Beginning Adult Piano Class – ages 13 and up

- 1-hour class, once a week for 10 weeks
- Mondays from 2:30-3:30 PM beginning October 2
- Tuition: \$200 (includes materials)
- Instructor: Kristen Stanton, Director of Music Ministries
- Location: Classroom A, Education Building

Maximum enrollment is 4 students. Slots will be filled on a first-come/first-served basis. Please contact Kristen at kristen@roserchurch.com or 941-778-0414, x110 if you are interested or have questions.

GRIEF SHARE



YOUR JOURNEY FROM MOURNING TO JOY

TOPICS:

- Is This Normal?
- Challenges of Grief
- The Journey of Grief - Part One
- The Journey of Grief - Part Two
- Grief and Your Relationships
- Why?
- Guilt and Anger
- Complicating Factors
- Stuck
- Lessons of Grief - Part One
- Lessons of Grief - Part Two
- Heaven
- What Do I Live for Now?



Help and encouragement after the death of a spouse, child, family member or friend. You are welcome to begin attending the program at any point. Each session is self-contained.

After the cards and flowers have stopped coming, friends and family return to their normal lives. But your grief continues and you feel alone. Our group is led by caring people who have experienced grief and successfully rebuilt their lives. We will walk with you on the long path through grief toward healing and hope for the future. There are three parts to your GriefShare experience— an encouraging, information-packed video featuring leading grief recovery experts, small group discussion

and a workbook for journaling and personal study exercise that reinforce the weekly session topics.

BEGINS WEDNESDAY, OCTOBER 4 AT 1:00 PM

in Classroom D and continues every Wednesday for 13 weeks. Call the church office (941-778-0414) to enroll. The cost is \$15 for the workbook (scholarships available).

The **ROSER** COMMUNITY CHURCH
MESSENGER



512 Pine Ave • PO Box 247 • Anna Maria FL 34216
941-778-0414 • info@roserchurch.com

www.roserchurch.com • www.facebook.com/roserchurch



STEPHEN MINISTRY CLASSES PLANNED FOR THIS WINTER

You have been reading about Roser's Stephen Ministry for months now. Why not consider joining us for our upcoming classes to become a Stephen Minister?

We are gathering names of persons in our Roser community who might be interested in sharing their gifts of compassion for those who are hurting, lonely, fearful, or perhaps facing health challenges or difficult decisions. The classes will include practicing care-giving skills such as effective listening, understanding feelings, and assertiveness within an environment of encouragement and distinctively Christian principles. Maintaining boundaries and the importance of confidentiality are discussed. In addition, you have an opportunity to grow in your personal Christian faith while you are acquiring skills that you will use throughout your lifetime.

Specific dates will be determined by the class members. These will include four 5- hour Saturdays and 9 weekday sessions of two and one-half hours, totally 50 hours. Classes will conclude the weekend before Palm Sunday.

A FREQUENTLY ASKED QUESTION: *How much of my time will it really involve?* There are 50 hours of training. As a Stephen Minister you will visit about once a week (for about one hour) with the person you are caring for. You will also attend one meeting per month for supervision and continuing education.

GIVE US A CALL to request more details. You may call the church office at 941-778-0414. Or you can contact one of the Stephen Leaders, who include JoAnne Moyer, Betsy Grundy, Lorna Smilde, Joy Bennington and Dee O'Brien. Also any of our current Stephen Ministers could share with you their experiences and the value of the classes.

Perhaps you know someone who might benefit from **RECEIVING** the care-giving skills of a Stephen Minister. If so, call the church office or JoAnne Moyer.

To receive **eUpdates**
[WEEKLY eBULLETIN plus]
please sign up on the Sunday
attendance pad, text **ROSER**
to 22828 or scan code above.

Please **LIKE** us on
Facebook to receive instant
updates and photos.

CHURCH COUNCIL MINUTES
and Annual Report are available
in the Narthex.

THE BULLETIN DEADLINE
is every Monday at Noon.
Please send your submissions to
bulletin@roserchurch.com.

TO SCHEDULE AN EVENT
check the online calendar at
www.roserchurch.com/calendar
then scroll down and complete
the form or call the church office.

THRIFT SHOP

We will be closed for the month of September for cleaning and re-organizing, though we will accept donations on Wednesdays from 9:00 to 11:00 AM. The Thrift shop will reopen Tuesday October 3rd. Many thanks to our tireless volunteers and the friends whose donations are so important!

VOLUNTEERS ARE NEEDED
Please call the church office or see
Peggy Nash to volunteer.
www.roserchurch.com/thrift-shop