



**LOVING CHRIST
SHARING HIS GRACE
SERVING ALL**

*We are so happy you are
worshiping with us today!
If you have questions or need
any assistance, please see an Usher
or stop by the Welcome Desk.*

Assistance Hearing Devices
are available from an usher.
To activate the LOOP HEARING
SYSTEM please turn your
hearing aid to T-coil.

The **Cry Room** (off the Narthex)
is available for nursing moms and
those with special needs.

A **Nursery** is available in the
Christian Education Building for
children under the age of 5 yrs.

Children, K-5th grade may attend
Church School following the
Children's Sermon. Youth meet
on the 2nd and 4th Sundays.

Please note on the prayer card
or call the office (941-778-0414)
if you or someone you know
would like a **Pastoral Visit**
or is in the hospital.

PASTOR
Rev. Dr. Robert O'Keef
910-580-7359

ASSOCIATE PASTOR
Rev. Neil Crowell
980-521-7129

DIRECTOR OF MUSIC MINISTRIES
Kristen Stanton

ROSER COMMUNITY CHURCH

MORNING WORSHIP • 8:30 AM & 10:00 AM
September 3, 2017 • 13th Sunday after Pentecost

An asterisk (*) indicates when those who are able will stand.

CHIMING OF THE TRINITY

A time to quiet our hearts, minds and voices in preparation for worship.
Please fill out your prayer request cards at this time to be handed to the
ushers later in the service.

PRELUDE *Meditation on "O Perfect Love"* Bradshaw

SIGNING OF FRIENDSHIP REGISTER & ANNOUNCEMENTS

Please sign the Friendship Register with your name and address for our
records of attendance and pass along to your pew mates.

***CHORAL CALL TO WORSHIP (Unison)**

**Lord, listen to your children praying,
Lord, send your Spirit in this place;
Lord listen to your children praying,
Send us love, send us power, send us grace.**

***HYMN OF ADORATION** *On Jordan's Stormy Banks* No. 674

***PRAYER OF PETITION (Unison)**

**Humbly we come together Lord. Thank you for the blessing of your
presence. We love you, and ask that you would make our love more sin-
cere. We give our hearts, our hands, our lives to you. Perfect our service
so that others may see you in us. In Christ's name we pray. Amen.**

GREETING ONE ANOTHER IN CHRISTIAN LOVE

CALL TO PRAYER *I Need Thee Every Hour* arr. Hayes

(Your prayer request cards will be collected by the ushers.)

(Minister)... In your steadfast love and mercy,
(People)... **Hear our prayers, O God.**

SILENT PRAYER

PASTORAL PRAYER

CHILDREN'S SERMON

THE GIVING OF GOD'S TITHES AND OUR OFFERINGS

OFFERTORY *The Lord's Prayer* Malotte
Erin Tribble, soloist

***DOXOLOGY** *Praise God From Whom All Blessings Flow* No. 809

**Praise God from whom all blessings flow;
praise Him, all creatures here below;
praise Him above, ye heavenly host;
praise Father, Son and Holy Ghost. Amen.**

***AFFIRMATION OF FAITH** The Apostle's Creed (Unison)

**I believe in God, the Father Almighty, maker of Heaven and earth;
and in Jesus Christ, His only Son our Lord, Who was conceived by the
Holy Spirit, born of the Virgin Mary, suffered under Pontius Pilate,
was crucified, dead and buried; the third day He rose from the dead;**

DEACON OF THE MONTH Anne Morse
MISSION OF THE MONTH Beth-El (page 4)
SOUND DIRECTOR Alan Ward
SOUND TECHNICIAN Michael Jennis
NURSERY LEADER Lisa Lardas
SUNDAY CUSTODIAN Jim Webb
FACILITIES ADMINISTRATOR Charles Wade
FINANCIAL ADMINISTRATOR Matt Meehan
CHURCH SECRETARY Cyndy Custis
MEDIA FACILITATOR Bev Hunsberger

**The flowers on the altar
this morning are given
to the glory of God:**

In honor of the 20th anniversary
of Margaret Art opening the Thrift
Shop, from the Roser Guild.

In memory of Bob, sister Mary
and her husband Kenny,
from Peggy Nash.

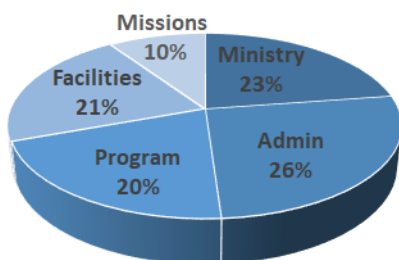
Honoring my John's
birthday, love Edie.

To honor a loved one with
SANCTUARY FLOWERS,
please sign the book in the
Narthex or contact the office
(941-778-0414).

HOW ARE WE DOING?

YTD Attendance
2016 - 11,957
2017 - 11,521
YTD Contributions
2016 - \$300,353
2017 - \$314,542
YTD Expenses - \$355,332
YTD Income - \$414,455

Contributions comprise the
portion of income donated by the
congregation. Monthly financial
reports available in the church
office provide full detail.



2017 YTD Use of Cash Received

August Mission of the Month
Global Service Network: \$868

He ascended into Heaven, and sitteth at the right hand of God, the Father almighty; from thence He shall come to judge the quick and the dead. I believe in the Holy Spirit, the holy catholic Church, the communion of saints, the forgiveness of sins, the resurrection of the body and the life everlasting. Amen.

SCRIPTURE

Joshua 1:1-9

After the death of Moses the servant of the Lord, the Lord spoke to Joshua son of Nun, Moses' assistant, saying, "My servant Moses is dead. Now proceed to cross the Jordan, you and all this people, into the land that I am giving to them, to the Israelites. Every place that the sole of your foot will tread upon I have given to you, as I promised to Moses. From the wilderness and Lebanon as far as the great river, the river Euphrates, all the land of the Hittites, to the Great Sea in the west shall be your territory. No one shall be able to stand against you all the days of your life. As I was with Moses, so will I be with you; I will not fail you or forsake you. Be strong and courageous; for you shall put this people in possession of the land that I swore to their ancestors to give them. Only be strong and very courageous, being careful to act in accordance with all the law that my servant Moses commanded you; do not turn from it to the right hand or the left, so that you may be successful wherever you go. This book of the law shall not depart out of your mouth; you shall meditate on it day and night, so that you may be careful to act in accordance with all that is written in it. For then you shall make your way prosperous, and then you shall be successful. I hereby command you: Be strong and courageous; do not be frightened or dismayed, for the Lord your God is with you wherever you go."

(Leader)...The word of God for the people of God.
(People)...Thanks be to God.

SERMON

"GET UP! GO!"

Dr. Bob O'Keef

CELEBRATION OF THE LORD'S SUPPER

As this is the Lord's Supper, this is an open table, and all are invited to participate. This morning we are receiving communion in the Chapel at the 8:30 a.m. Service in the pews and by intinction at the 10:00 a.m. Service in the Sanctuary. You will be given a piece of bread to be dipped in the cup.

The Great Thanksgiving

The Lord be with you.
And also with you.
Lift up your hearts.
We lift them up to the Lord.
Let us give thanks to the Lord our God.
It is right to give our thanks and praise.



It is right, and a good and joyful thing, always and everywhere to give thanks to you, Father Almighty, creator of heaven and earth. You formed us in your image and breathed into us the breath of life. When we turned away, and our love failed, your love remained steadfast. You delivered us from captivity, made covenant to be our sovereign God, and spoke to us through the prophets. And so, with your people on earth and all the company of heaven we praise your name and join their unending hymn:

Holy, holy, holy Lord, God of power and might, heaven and earth are full of your glory. Hosanna in the highest. Blessed is he who comes in the name of the Lord. Hosanna in the highest.

THIS WEEK AT ROSER

NOTE: Thrift Shop closed this month

SUNDAY • September 3

COMMUNION SUNDAY

8:30 - Served in the pews
10:00 - Served by intinction

MUSIC Erin Tribble, vocal soloist

8:30 WORSHIP SERVICE Chapel

8:45 Adult Sunday School Class . . . FH

10:00 WORSHIP SERVICE S

10:00 Church School CD

MONDAY • September 4

LABOR DAY • Church office closed

No Bridge today

7:30 AA & Alanon S

TUESDAY • September 5

9:00 Volunteer Workday

11:00 Staff Meeting

3:15 Joyful Noise Rehearsal Pg 4

WEDNESDAY • September 6

9:00-11:00 Thrift Shop Donations . Pg 8

9:30 Roser-Robics Pg 6

2:45 Golfing for God Pg 4

THURSDAY • September 7

10:30 AA Meditation CD

7:00 Chancel Choir Pg 4

7:30 AA & Alanon FH & LB

FRIDAY • September 8

9:30 Roser-Robics Pg 6

SATURDAY • September 9

No activities today.



SUNDAY • September 10

8:30-12:00 BLOOD DRIVE Pg 5

MISSION MOMENT Beth-El

8:30 WORSHIP SERVICE Chapel

MUSIC Island Praise Quartet

8:45 Adult Sunday School Class . . . FH

10:00 WORSHIP SERVICE S

MUSIC Chancel Choir

10:00 Church School CD

ROOM KEY

CB - Classroom B, CD - Classroom D,

CM - Colman, FH - Fellowship Hall,

LB - Library, S - Sanctuary

Holy are you, and blessed is your Son Jesus Christ. Your Spirit anointed him to preach good news to the poor, to proclaim release to the captives and recovering of sight to the blind, to set at liberty those who are oppressed, and to announce that the time had come when you would save your people. He healed the sick, fed the hungry, and ate with sinners. By the baptism of his suffering, death, and resurrection you gave birth to your Church, delivered us from slavery to sin and death, and made with us a new covenant by water and the Spirit. When the Lord Jesus ascended, he promised to be with us always, in the power of your Word and Holy Spirit.

On the night in which he gave himself up for us, he took bread, gave thanks to you, broke the bread, gave it to his disciples, and said: "Take, eat; this is my body which is given for you. Do this in remembrance of me."

When the supper was over, he took the cup, gave thanks to you, gave it to his disciples, and said: "Drink from this, all of you; this is my blood of the new covenant, poured out for you and for many for the forgiveness of sins. Do this, as often as you drink it, in remembrance of me." And so, in remembrance of these your mighty acts in Jesus Christ, we offer ourselves in praise and thanksgiving as a holy and living sacrifice, in union with Christ's offering for us, as we proclaim the mystery of faith.

Christ has died; Christ is risen; Christ will come again.

Pour out your Holy Spirit on us gathered here, and on these gifts of bread and wine. Make them be for us the body and blood of Christ, that we may be for the world the body of Christ, redeemed by his blood.

By your Spirit make us one with Christ, one with each other, and one in ministry to all the world, until Christ comes in final victory and we feast at his heavenly banquet. Through your Son Jesus Christ, with the Holy Spirit in your holy Church, all honor and glory is yours, almighty Father, now and for ever.

Amen.

SERVING THE BREAD & CUP

PRAYER OF THANKSGIVING

***HYMN OF DEDICATION**

Near The Cross

No. 549

BENEDICTION

Benediction Response

Blest Be The Tie That Binds

No. 708

POSTLUDE

Voluntary on "Aurelia"

Broughton

Many thanks to Erin Tribble for sharing her gift with us today. Erin is a senior at the University of Central Florida, majoring in history, and works as a registrar at the Blake Hospital ER.



Flood relief team through Samaritan's Purse to serve the Greater Houston Area for 7-9 days in Sept. If you are interested please meet in Neil's office after the 10:00 am worship service for 15 minutes. Thanks so much for your willingness to serve our Lord in this time of great need!

Mark Your Calendar

PLEASE NOTE: BRed will meet on Monday, September 11.

Tuesday • September 12

Tues@2 Women's Study: The Lord's Prayer (2:00 PM)

Wednesday • September 13

JOY (Just Older Youth) Pg 6

Wednesday • September 20

Golfing for God at IMG (2:45 PM)

Sunday • September 24

Fellowship Sunday

Tuesday • September 26

Tues@2 Women's Study: The Lord's Prayer (2:00 PM)

Wednesday • September 27

JOY (Just Older Youth) (11:00 AM)

Tuesday • October 3

Terrific Tuesdays begin Pg 6

Wednesday • October 4

GriefShare begins Pg 7
Golfing for God at IMG (2:45 PM)

Wednesday • October 11

JOY (Just Older Youth) (11:00 AM)

Wednesday • October 18

Golfing for God at IMG (2:45 PM)

Saturday • October 21

BAYFEST

Wednesday • October 25

JOY (Just Older Youth) (11:00 AM)

Died to Life Everlasting

Nancy Carson died to Life Everlasting on August 23, 2017 in Brevard, NC. She joined Roser Church in 1975 and was an active member, involved in the Thrift Shop, the food pantry and serving at Roser's annual Community Thanksgiving Dinner, and many other boards. A service was held in Brevard on August 31st. A Celebration of Life will be held at Roser Church—date to be announced. Our deepest sympathy is extended to Nancy's family and her many friends.

Mission of the Month

MISSION MOMENT • SUNDAY, SEPTEMBER 10

Migrant farmworkers are the poorest of the working poor. Some remain in one location year round, while others follow the crops. Beth-El Farmworker Ministry began in 1976 when a small group of Cumberland Presbyterians rented a tiny house in Ruskin, Florida and began holding Spanish-language church services for migrant farmworkers. When the families came to worship, their many other needs were obvious: they were usually hungry, often cold in winter, some slept in cars or trucks, many could neither read nor write, and most lived in fear of deportation. In its effort to meet some of those needs, Beth-El grew.

Now legally a nonprofit corporation, Beth-El Farmworker Ministry, Inc. has a 27-acre site on U.S. Highway 301 about 20 miles south of Tampa. The Ministry serves the nearby rural population. To learn more about Beth-El go to www.beth-el.org.

To donate to Beth-El, please use the envelope in the pew or GIVE online at www.RoserChurch.com/GIVE and note that your gift is for MISSION OF THE MONTH.



CHANCEL CHOIR

REHEARSALS BEGIN THURSDAY, SEPTEMBER 7 AT 7:00 PM

The loft has plenty of seating available and we'd love to have you join us! It is not necessary that you be able to read music, just a desire to lift your voice in praise.

WHETHER YOU ARE 13, 30 OR 92 WE HAVE A PLACE FOR YOU!

Joyful Noise
A FREE AFTER SCHOOL Community Choir
for Children in K-5th Grade
Directed by Kristen Stanton, DIRECTOR OF MUSIC MINISTRIES
Van transportation from A.M.E. • Snacks
More info & Register ONLINE: RoserChurch.com/joyful-noise

TUESDAYS 3:15-4:00 Starts Sept 5

Hands On Missions

Call the Church Office for contact information— 941-778-0414.

▶ **Join the Missions Committee**

Never a dull moment... we are growing—adding programs and missionaries. If you have a passion for missions—check us out! Contact: Pam Alvord

▶ **Our Daily Bread • Sept. 11**

To help serve contact Lynn Brennan. The Roser team serves on every 2nd Monday and 5th Sunday! This is a community-driven organization that provides free daily meals to all who are hungry. Hot lunch is served to over 200 people a day, 7 days a week.

▶ **Youth for Christ**

Volunteer, listen to the kids at club, bring food and drinks or money for food and drinks. Send a kid to camp—it could change his/her eternal future. Contact: Pam Alvord

▶ **Jim Russo Prison Ministry**

Donations of towels, linen, and men's needs are welcomed. Contact: Mike Oney

▶ **Roser Food Pantry**

Volunteer/donations
Contact: Jack & Lynn Brennan

▶ **Roser Thrift Shop**

Volunteer/donations
Contact: Peggy Nash

▶ **Beth-El Farmworker Ministry**

Any and every donation helps the migrant workers. Contact: Anne Morse

▶ **Roser Women's Guild**

Can tabs, canceled stamps cut from envelope with 1/3" border, school box tops and labels for education can be left in the Women's Guild Box in the church office or given to Glenda Beck for AME.



Dr. Bob O'Keef is teaching through THE GOSPEL OF JOHN!

The Gospel of John celebrates Jesus as the Word of God, the source of life, light, and truth. It is the most **SPIRITUAL** of the Gospels, and the most **BEAUTIFULLY WRITTEN**. Scenes of night and day are intended to help its readers move from **DARKNESS** to **LIGHT**. Only in the light of Christ can we **TRULY SEE, TRULY LIVE, and TRULY BE ALL THAT GOD WANTS US TO BE.**

WEDNESDAY, SEPT 6

IMG Academy, Bradenton

Dinner & Bible Study 5:30 PM • \$20

Dinner & Bible Study + Clinic • \$40

Dinner & Bible Study + Golf 2:45 PM • \$35

9-hole scramble for all levels of golfers

Register: Online, in the Narthex, call the office

or go to www.roserchurch.com/golfing-for-god

Next dates: September 20, October 4, 18

A 9/11 REMEMBRANCE

ON SUNDAY, SEPTEMBER 10 • 8:30 - 12:00

We can give the gift that gives life in honor of those who lost their lives.

Everyone who donates will receive a t-shirt.

Register in the Narthex, the church office or online at

www.roserchurch.com/blood



THE BENEFITS OF GIVING BLOOD

• **RECEIVE A FREE WELLNESS CHECKUP.**

Each time you donate you'll receive a free wellness checkup which includes blood pressure, pulse, temperature, iron count and cholesterol screening. These wellness checkups have saved the lives of some of those who volunteer to give blood.

• **YOU MAY BE LESS LIKELY TO HAVE A HEART ATTACK.**

Donating regularly may help your blood flow and result in fewer arterial blockages. In fact, some studies have shown that men who donate at least three times a year can drastically reduce their risk of having a heart attack or stroke.

• **DONATING CAN KEEP YOUR IRON LEVEL BALANCED.**

Having too much iron in your blood can contribute to hardening of the arteries. When you donate blood, the amount of iron in your blood is reduced. The iron will be replenished by the food you eat after donating, but regular donations can balance your iron level.



9:30 AM Wednesdays & Fridays

FELLOWSHIP HALL

This chair-based exercise class is appropriate for older adults and those looking to lessen the impact on their joints.

THE COST: Donation-based
BRING: 2 cans of fruit of equal size and weight.



11:00 AM - 2:00 PM Wednesday, SEPTEMBER 13

We will show the movie "THE HIDING PLACE", the story of Corrie ten Boom and her family who were caught hiding Jews and were sent to a Nazi concentration camp where they were great witnesses for Christ. Come, relax, and be inspired. The movie is a little long (2 hr 20 min) so we will be serving lunch for \$5 (Publix sandwiches and other goodies) to eat during the showing. Please RSVP by Monday, September 11th to the Church office 778-0414.

TERRIFIC TUESDAYS ARE BACK

a four-week fall installment

OCTOBER 3RD TO OCTOBER 24



Dinner at 5:30 PM each Tuesday.

THE COST IS \$6 PER PERSON (OR \$15 A FAMILY).

From 6:15 to 7:15 PM, we will offer two Bible studies for adults, and a youth/children's study as well. The two studies are:

BAD GIRLS OF THE BIBLE



There are many Bad Girls in the Bible. Each of them demonstrate one great truth -- God's sovereignty. God works through us (even our sins!) to accomplish His will. In our study, we will focus on four women whom God uses in spite of their faults -- the witch of Endor, the woman caught in adultery, Bathsheba, and Tamar. We will see, hopefully, how God can use us, too.

ba, and Tamar. We will see, hopefully, how God can use us, too.

Taught by- Rev. Dr. Bob O' Keef
Location: Chapel

THEOLOGY OF HYMNS: THE GOOD, THE BAD, AND THE UGLY

Ever sung hymns in church and not understood them? Have you ever wondered if some hymns line up with Scripture? This class will explore different hymns each week, study the history of them, and ask whether they are theologically sound.

Taught by- Rev. Neil Crowell
Location: Fellowship Hall





SEPTEMBER

- 5 Myralyn Hartsfield
- 7 Wayne Patterson
- 8 Diane Ziemke
- 9 Rachel Willet
- 10 Bev Hunsberger
- 10 Susan Nudd
- 11 Nancy Colcord
- 11 Betsy Grundy
- 11 Sally Martin
- 12 Joyce Brehm
- 12 Lucy Walter
- 14 Jack Lundy
- 14 Marcia Powers
- 15 Karen Parsons
- 17 Erika Mendez
- 17 Betsy Nichols
- 18 Joy Bennington
- 18 Barbara Calhoun

If your birthday is not listed or is incorrect, please call the office (941-778-0414) or email info@roserchurch.com

Note of Thanks

My heart is filled with gratitude to all of you. Your calls, love, prayers, cards and notes of encouragement for David and me through his battle with cancer and the days since he entered the Gates of Heaven mean more than you could possibly imagine. Thanks to Dr. Bob for visiting and speaking and those that attended the Celebration of Life!

Bev Hunsberger



BEGINNING ADULT PIANO CLASS

Always wanted to learn to play the piano but never had time?? Played years ago but have forgotten most of what you learned?? Then this is for you!

Beginning Adult Piano Class – ages 13 and up

- 1-hour class, once a week for 10 weeks
- Mondays from 2:30-3:30 PM beginning October 2
- Tuition: \$200 (includes materials)
- Instructor: Kristen Stanton, Director of Music Ministries
- Location: Classroom A, Education Building

Maximum enrollment is 4 students. Slots will be filled on a first-come/first-served basis. Please contact Kristen at kristen@roserchurch.com or 941-778-0414, x110 if you are interested or have questions.

GRIEF SHARE

YOUR JOURNEY FROM MOURNING TO JOY

TOPICS:

- Is This Normal?
- Challenges of Grief
- The Journey of Grief - Part One
- The Journey of Grief - Part Two
- Grief and Your Relationships
- Why?
- Guilt and Anger
- Complicating Factors
- Stuck
- Lessons of Grief - Part One
- Lessons of Grief - Part Two
- Heaven
- What Do I Live for Now?

Help and encouragement after the death of a spouse, child, family member or friend. You are welcome to begin attending the program at any point. Each session is self-contained.

After the cards and flowers have stopped coming, friends and family return to their normal lives. But your grief continues and you feel alone. Our group is led by caring people who have experienced grief and successfully rebuilt their lives. We will walk with you on the long path through grief toward healing and hope for the future. There are three parts to your GriefShare experience— an encouraging, information-packed video featuring leading grief recovery experts, small group discussion

and a workbook for journaling and personal study exercise that reinforce the weekly session topics.

BEGINS WEDNESDAY, OCTOBER 4 AT 1:00 PM

in Classroom D and continues every Wednesday for 13 weeks. Call the church office (941-778-0414) to enroll. The cost is \$15 for the workbook (scholarships available).

The **ROSER** COMMUNITY CHURCH
MESSENGER



512 Pine Ave • PO Box 247 • Anna Maria FL 34216
941-778-0414 • info@roserchurch.com

www.roserchurch.com • www.facebook.com/roserchurch



STEPHEN MINISTRY CLASSES PLANNED FOR THIS WINTER

You have been reading about Roser's Stephen Ministry for months now. Why not consider joining us for our upcoming classes to become a Stephen Minister?

We are gathering names of persons in our Roser community who might be interested in sharing their gifts of compassion for those who are hurting, lonely, fearful, or perhaps facing health challenges or difficult decisions. The classes will include practicing care-giving skills such as effective listening, understanding feelings, and assertiveness within an environment of encouragement and distinctively Christian principles. Maintaining boundaries and the importance of confidentiality are discussed. In addition, you have an opportunity to grow in your personal Christian faith while you are acquiring skills that you will use throughout your lifetime.

Specific dates will be determined by the class members. These will include four 5- hour Saturdays and 9 weekday sessions of two and one-half hours, totally 50 hours. Classes will conclude the weekend before Palm Sunday.

A FREQUENTLY ASKED QUESTION: *How much of my time will it really involve?* There are 50 hours of training. As a Stephen Minister you will visit about once a week (for about one hour) with the person you are caring for. You will also attend one meeting per month for supervision and continuing education.

GIVE US A CALL to request more details. You may call the church office at 941-778-0414. Or you can contact one of the Stephen Leaders, who include JoAnne Moyer, Betsy Grundy, Lorna Smilde, Joy Bennington and Dee O'Brien. Also any of our current Stephen Ministers could share with you their experiences and the value of the classes.

Perhaps you know someone who might benefit from **RECEIVING** the care-giving skills of a Stephen Minister. If so, call the church office or JoAnne Moyer.

To receive **eUpdates**
[WEEKLY eBULLETIN plus]
please sign up on the Sunday
attendance pad, text **ROSER**
to 22828 or scan code above.

Please **LIKE** us on
Facebook to receive instant
updates and photos.

CHURCH COUNCIL MINUTES
and Annual Report are available
in the Narthex.

THE BULLETIN DEADLINE
is every Monday at Noon.
Please send your submissions to
bulletin@roserchurch.com.

TO SCHEDULE AN EVENT
check the online calendar at
www.roserchurch.com/calendar
then scroll down and complete
the form or call the church office.

THRIFT SHOP

We will be closed for the month of September for cleaning and re-organizing, though we will accept donations on Wednesdays from 9:00 to 11:00 AM. The Thrift shop will reopen Tuesday October 3rd. Many thanks to our tireless volunteers and the friends whose donations are so important!

VOLUNTEERS ARE NEEDED
Please call the church office or see
Peggy Nash to volunteer.
www.roserchurch.com/thrift-shop